



MONTHLY MEMBERSHIP PROGRESS REPORT

District 306 A2

Results as of: 06/30/2019

GMT: VASUDEV VALAWALKAR

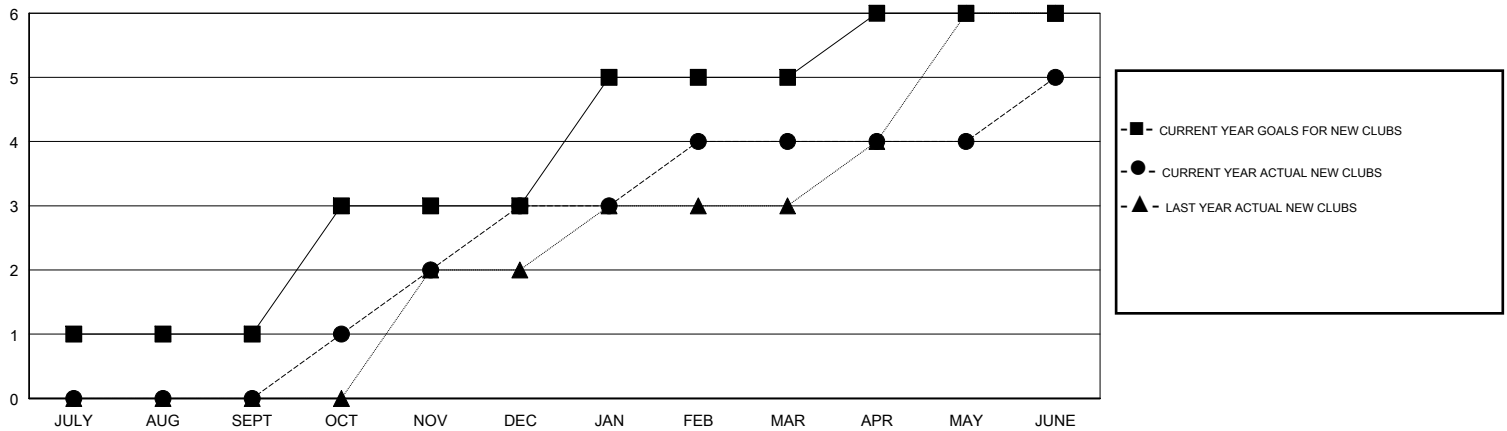
LOCATION REP OF SRI LANKA

GMT CA

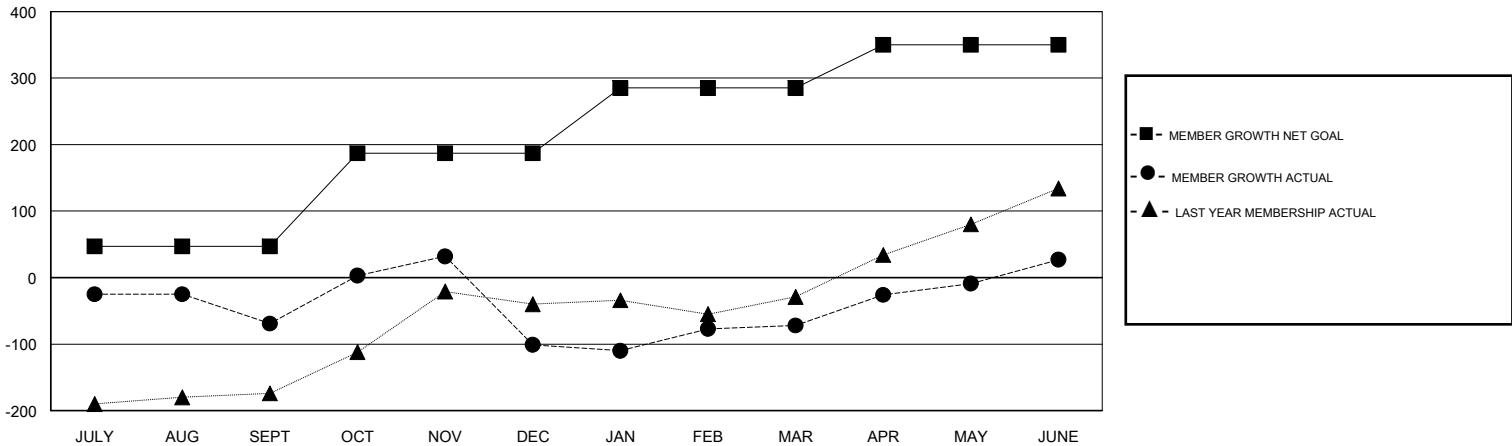
| Clubs | | | |
|-----------------------|---------------|-----------|---------------|
| RESULTS FOR 2018-2019 | | | |
| QUARTER | NEW CLUB GOAL | NEW CLUBS | DROPPED CLUBS |
| JULY/AUG/SEPT | 1 | 0 | 1 |
| OCT/NOV/DEC | 2 | 3 | 0 |
| JAN/FEB/MAR | 2 | 1 | 0 |
| APR/MAY/JUNE | 1 | 1 | 0 |

| Members | | | |
|-----------------------|------------------------|----------------------|--|
| RESULTS FOR 2018-2019 | | | |
| QUARTER | MEMBER GROWTH NET GOAL | MEMBER GROWTH ACTUAL | DROPPED MEMBERS ACTUAL (including transfers) |
| JULY/AUG/SEPT | 47 | 12 | 80 |
| OCT/NOV/DEC | 140 | 150 | 179 |
| JAN/FEB/MAR | 98 | 68 | 34 |
| APR/MAY/JUNE | 65 | 185 | 69 |

GOALS AND ACTUAL NEW CLUBS CUMULATIVE



GOALS AND ACTUAL MEMBERS CUMULATIVE



| | | |
|---|---|--|
| DROPPED CLUBS: 1 | 83 CLUBS OF 101 ADDED 1 OR MORE NEW MEMBERS | <u>GENDER DISTRIBUTION</u> MALE 2,031 (77.17%) FEMALE 601 (22.83%) Women Percentage Fiscal Year Goal: 25% |
| <u>DROPPED MEMBERS</u> DECEASED 8 CLUB CANCELLED 26 OTHER 328 TOTAL 362 | CLICK HERE FOR CUMULATIVE MEMBERSHIP DATA | TOTAL FAMILY UNIT MEMBERS 951 FAMILY MEMBERS PAYING HALF DUES 515 |